

The Weekly Press

SERVING BAKER, CENTRAL, AND ZACHARY

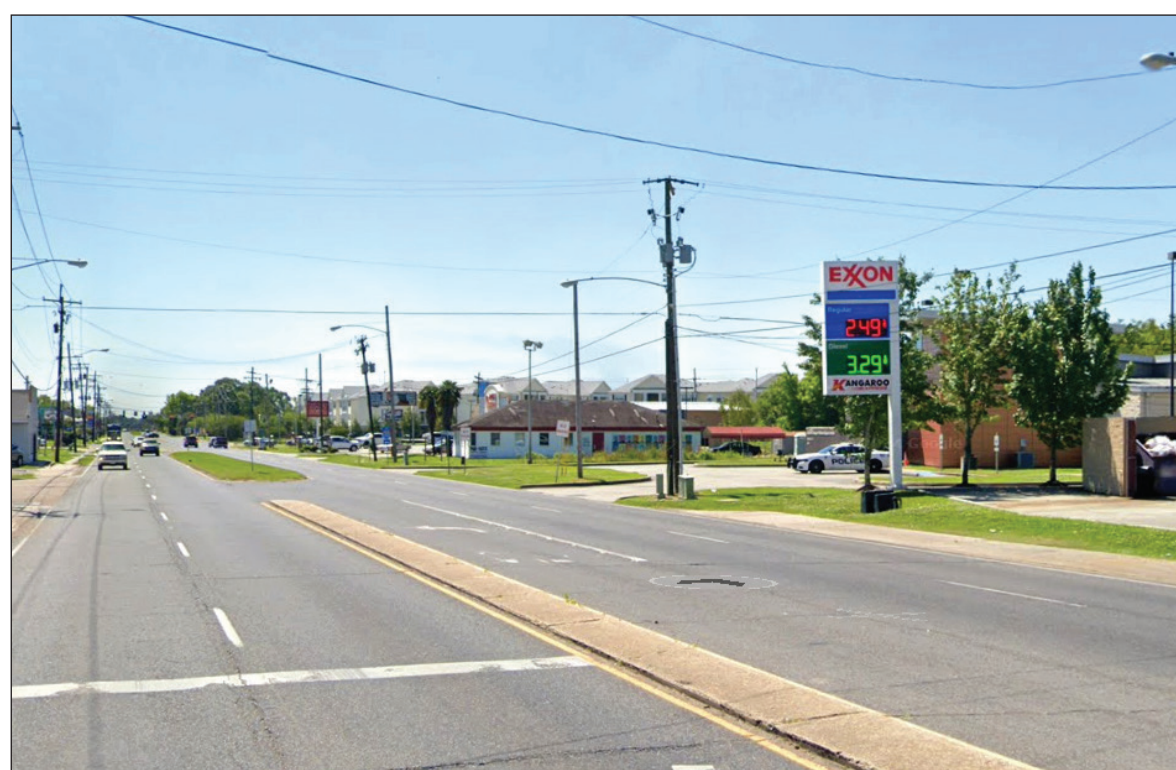
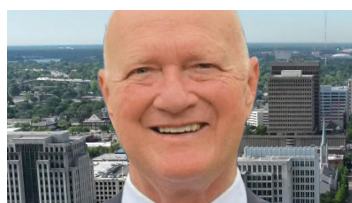
THURSDAY, JANUARY 2-8, 2025

A PEOPLE'S PUBLICATION

VOL. 46 • NO.40 • FREE

MAYOR PRESIDENT SID EDWARDS

Shares Bold Plans for North Baton Rouge at Team Meeting



Coach Sid Edwards delivers his victory speech to a cheering crowd of supporters after being elected East Baton Rouge Mayor-President. Edwards emphasized unity and collaboration as the key focus of his administration.

"A good coach never reveals the game plan before the game," he said, adding that his administration will focus on collaboration and delivering solutions to the parish's most pressing issues.

By Tiffany Bradford
BR Weekly Press Newspaper

BATON ROUGE, La. — Coach Sid Edwards defied the odds to win the race for East Baton Rouge Mayor-President, delivering a message of unity and change to voters across the parish.

Emphasizing his deep connection to the community and faith-driven approach, Edwards described the campaign as "a movement, not just a moment." His

victory, he said, symbolizes a mandate for change. "The people have spoken. They're ready for solutions and ready to work together. This was not a race about division—it was about coming together for a better East Baton Rouge," he said.

Edwards, a longtime football coach and educator, credited his family and team for their sacrifices and support. His wife, Beanie, and his extended family were key to his success, he noted, as they

See **MEETING**, on page 2

Louisiana Families, Marginalized Communities Brace for Rising Grocery Costs Amid Persistent Inflation



African American and marginalized communities, inflation is compounding systemic economic inequities. These households often allocate a larger portion of their income to necessities—such as food, housing, and energy—which have seen the most significant price increases.

By Tiffany Bradford
BR Weekly Press

As 2025 nears, Louisiana residents are grappling with the lingering effects of inflation, with grocery prices expected to remain elevated. The economic challenges are particularly acute for African American and marginalized communities, exacerbating long-standing disparities in the state.

GROCERY COSTS SOAR STATEWIDE

Food inflation remains a pressing issue, with Walmart CEO Doug McMillon warning that prices for staples like eggs, dairy, and processed

foods are unlikely to return to pre-pandemic levels anytime soon. Nationally, food-at-home prices have surged 25% since 2019, according to Consumer Price Index data, and Louisiana's reliance on fresh, local ingredients makes the state especially vulnerable to these increases.

Meat, poultry, fish, and eggs have seen some of the sharpest price hikes over the past year, straining household budgets across Louisiana. Low- and middle-income families are feeling the greatest pressure in southern parts of the state, where grocery costs are historically higher due to supply chain

See **INFLATION**, on page 2

READ ONLINE

■ New EMS Station to Boost Response Times in Central Baton Rouge

■ IDEA Schools in Baton Rouge to Close: Families Face Uncertainty as Two Campuses Shut Down

■ Louisiana Lawmakers Concerned as Key Voting Rights Case Threatens Protections for Black Voters

■ ExxonMobil Baton Rouge Honored as 2024 Large Manufacturer of the Year



Special Election in District 14 Draws Big Names as Cleo Fields' Successor is Sought

By Tiffany Bradford
BR Weekly Press Newspaper

BATON ROUGE, La. — A pivotal race is shaping up in Louisiana Senate District 14 as prominent figures prepare to compete for the seat vacated by Congressman-elect Cleo Fields. Among the contenders is Quentin Anthony Anderson, a Democratic leader and vocal advocate for North Baton Rouge, who will officially announce his candidacy on Sunday, Jan. 5.

The vacancy comes after Fields, a veteran politician, clinched a decisive win in Louisiana's 6th Congressional District, earning 150,323 votes in the November election. With his move to Washington, the District 14 seat is now a hot ticket in Baton Rouge politics.



Quentin Anthony Anderson: Democratic candidate Quentin Anthony Anderson prepares to announce his campaign for the Louisiana Senate District 14 seat, focusing on economic growth, education reform, and investments in North Baton Rouge.

Anderson, who gained traction during his previous run for the 6th Congressional District—where he secured 23,811 votes—has promised to tackle longstanding issues in the community.

"This district deserves a senator who will fight for progress and deliver results," Anderson said. "From raising wages to improving schools and investing in North Baton Rouge, I'm committed to addressing the challenges our families face every day."

COMPETITIVE FIELD EMERGING

Anderson's campaign won't be without competition. State Representative Larry Selders and Carolyn Hill, a former member of the Board of Ele-

See **ELECTION**, on page 2



Be ready for anything.

From unexpected gifts or a stop by from your oldest, we all love a surprise. But flu, COVID-19, and RSV can catch you off guard. These viruses are 10 times more likely to hospitalize adults 65 and older than people under 50. Lower your risk of severe illness with this season's vaccines and be ready for the good surprises.

Get started at vaccines.gov

RISK LESS. DO MORE.
Get this season's vaccines

Paid for by the U.S. Department of Health and Human Services.

STATE & LOCAL

New EMS Station to Boost Response Times in Central Baton Rouge



The future site of East Baton Rouge EMS Station No. 9 takes shape along Airline Highway. The \$2.6 million facility, set to open in May 2025, will enhance emergency response times and serve as a disaster supply hub.

BATON ROUGE, La. — A state-of-the-art East Baton Rouge Parish Emergency Medical Services (EMS) station is under construction on Airline Highway, poised to address critical service gaps and improve response times for residents in the area.

Station No. 9, a \$2.6 mil-

lion facility, will serve as a fully equipped EMS station and a disaster supply hub. According to EMS spokesperson Brad Harris, the station's strategic location and features aim to enhance emergency care delivery and disaster preparedness across the parish.

"When hurricanes or severe storms hit, we often have surge units coming in from other states," Harris explained. "This facility will provide them with essential resources, including dormitories, kitchen areas, and parking for their ambulances."

The new station, equipped with three ambulance bays, will also help redistribute EMS re-

sources. Harris noted that ambulances currently concentrated at other stations will be moved to Station No. 9, creating a more balanced coverage area.

"Right now, the closest EMS station to this part of Airline Highway is about 10 minutes away, which can feel like a lifetime during an emergency," Harris said. "This station fills a critical gap in the center of the parish where we receive a significant number of calls."

The improved proximity to high-demand areas is expected to reduce response times for emergency calls.

"It's all about getting help to people faster," Harris added. "This new station allows us to

be closer to those who need us, ensuring ambulances reach them more quickly when they call 911."

Set to open in May 2025, Station No. 9 represents one of several initiatives underway to expand EMS coverage in East Baton Rouge Parish. Plans are also in development for additional stations in Greenwell Springs and South Baton Rouge.

By addressing service gaps and preparing for emergencies, the new facilities aim to strengthen the parish's capacity to meet growing demands and ensure residents receive timely, life-saving care.

MEETING from page 1

managed his responsibilities at home and work while he balanced his campaign.

The new Mayor-President also extended gratitude to his fellow educators, football players, and colleagues at Istrouma High School, where he has worked for decades.

"They endured a lot during this campaign, but their belief in me never wavered," he said.

Acknowledging outgoing Mayor-President Sharon Weston Broome, Edwards praised her decades of public service. "She gave so much to this community, and I want to recognize her efforts over the last eight years," he said.

While Edwards declined to share specific details of his plans, he promised transfor-

mative leadership. "A good coach never reveals the game plan before the game," he said, adding that his administration will focus on collaboration and delivering solutions to the parish's most pressing issues.

The night concluded with a call to action for the parish to unite. "Put your big boy pants on, Baton Rouge, because we're about to win," Edwards said, as the crowd erupted in cheers.

INFLATION from page 1

challenges.

"Prices remain a lot higher than before the pandemic," McMillon noted, despite Walmart's efforts to manage costs.

MARGINALIZED COMMUNITIES FACE COMPOUNDING CHALLENGES

For African American and marginalized communities, inflation is compounding systemic economic inequities. These households often allocate a larger portion of their income to necessities—such as food, housing, and energy—which have seen the most significant price increases.

A 2024 report found that Black individuals in Louisiana continue to face higher unemployment rates and lower wages than their white counterparts, leaving them particularly vulnerable to inflation's effects. In addition, extremely low-income renters, disproportionately from marginalized communities, are struggling to afford housing despite some stabilization in rent inflation over the past year.

"The structural inequities in our economy mean inflation hits harder for communities already dealing with wage gaps and limited access to resources," said a Louisiana Food Bank Association representative.

ECONOMIC RIPPLE EFFECTS ACROSS LA

The rising cost of grocer-

ies isn't just affecting households. Louisiana's restaurant and hospitality sectors, which rely on affordable food supplies, are grappling with tighter margins. Small grocers in underserved communities face additional pressures, threatening food access in these areas.

Experts warn that economic challenges could worsen disparities unless targeted interventions are implemented. Political movements aiming to roll back policies that have supported Black economic gains, such as "Project 2025," could further erode progress for marginalized communities.

OUTLOOK FOR 2025 AND STEPS TOWARD RELIEF

While inflation may ease later in 2025 as commodity prices stabilize, processed food prices are likely to remain elevated. Supply chain adjustments and increased local food production could provide some relief, but experts caution that significant price reductions are unlikely in the short term.

To help families cope, local organizations and policymakers are taking steps to mitigate inflation's impact:

- **Community Support:** Groups like the Louisiana Food Bank Association are expanding efforts to assist families in need.

- **Policy Measures:** Subsidies for agriculture at the federal and local levels aim to stabilize prices for essential

See **INFLATION**, on page 3

ELECTION from page 1

mentary and Secondary Education, have also signaled their intentions to run. Both bring their own political experience and community ties, making this a closely watched race in Louisiana politics.

The special election is set for Feb. 15, 2025, with candidate qualifying taking place Jan. 7-9. Voters in the district will play a critical role in shaping the balance of power in the Louisiana Senate.

A RACE WITH HIGH STAKES

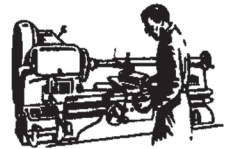
District 14, a majority-Black district that includes

parts of Baton Rouge, has long been a hub of progressive activism and a bellwether for statewide policies. The upcoming election is expected to focus on key issues like education funding, economic growth, and addressing systemic disparities in healthcare and housing.

For voters, the choice will be about more than replacing Cleo Fields—it will be about setting a vision for the district's future. As the February election draws closer, candidates will likely intensify their outreach, making their case to voters about why they are the right choice to carry on Fields' legacy.

Stay tuned as the race unfolds, with District 14's future hanging in the balance.

READER INFORMATION



How to Reach Us
General Information 225-775-2002
Email: brweeklypress@yahoo.com

The office is open 9:00 a.m. to 5:00 p.m. Monday - Friday and located at 4910 Monticello Blvd. Baton Rouge, LA 70814

Correction Policy

The Baton Rouge Weekly Press strives to be fair and accurate. The newspaper corrects any significant errors of fact brought to the attention of the editor. If you think an error has been made, call 225-775-2002



WE'VE GOT YOU COVERED

I can help you protect more than you'd expect. I also have lots of ways to help you save when you bundle your policies. Get the savings you deserve. Call or stop by my office for a free quote.



AGNES SMITH ANDREWS

Insurance Agent/Owner
214 S. Acadian Thruway
Baton Rouge LA 70806

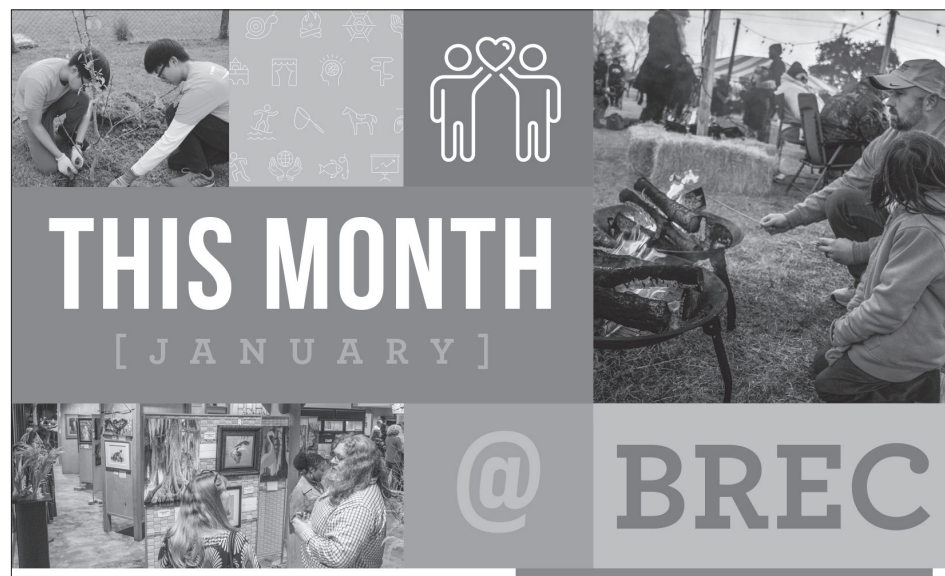
Phone: 225.383.0877
Fax: 225.383.0877
Claims: 225.383.0877



Email: AgnesAndrews@Allstate.com
www.allstateagencies.com/agnesandrews



Allstate
You're in good hands.



ZOO + ME MORNING 📍
BREC's Baton Rouge Zoo
Jan. 11 | 9:30-11:30 a.m.

SHORT + SWEET TEEN EVENT
Howell Community Park
Jan. 15 | 5-6:30 p.m.

DELIGHTFUL DETOURS + RADICAL ROADBLOCKS
Milton J. Womack Park Ballroom
Jan. 16 | 6:30-8 p.m.

SWAMP ART SOIREE
Bluebonnet Swamp Nature Center
Jan. 16 | 5:30-7:30 p.m.

SWAMP ART SPECTACULAR
Bluebonnet Swamp Nature Center
Jan. 17-23 | Regular Operating Hours

SUNSHINE SOCIAL: LIGHT UP THE NIGHT GLOW PARTY 📍
Milton J. Womack Park Ballroom
Jan. 17 | 6-9 p.m.

MORE TREES? YES, PLEASE!
Hooper Road/Sharon Hills Park
Jan. 18 | 9 a.m.-noon

REGISTER FOR NEW PROGRAMS + CLASSES BEGINNING IN JANUARY

🌐 BREC.ORG/CALENDAR

YOUNG PICASSO'S 📍
Milton J. Womack Park
Jan. 18 | 10:30-11:30 a.m.

COMMUNITY BONFIRE Highland Road Community Park Grand Pavilion
Jan. 18 | 4-8 p.m.

CAMP-IN 📍
Antioch Boulevard Park + Church Street Park + Lovett Road Park
Jan. 20 | 7:30 a.m.-5:30 p.m.

WINTER STUDENT HORSE SHOW
Farr Park Equestrian Center
Jan. 25 + 26 | 9 a.m.-2 p.m.

🌐 BREC.ORG/THISMONTH



IDEA Schools in Baton Rouge to Close: Families Face Uncertainty as Two Campuses Shut Down



IDEA campuses set to close at the end of the 2024-25 school year, leaving nearly 2,000 students and their families facing uncertain educational options.

BATON ROUGE, La. — The closure of IDEA Public Schools' two Baton Rouge campuses, IDEA Innovation and IDEA Bridge, at the end of the 2024-25 school year has left nearly 2,000 students and their families facing uncertainty about their education options. The decision, announced on January 7, follows years of underperformance and challenges stemming from the COVID-19 pandemic.

IDEA's closure marks the end of a six-year attempt to replicate the success of the charter network's Texas schools in Baton Rouge. The

local campuses, which opened in 2018, have faced persistent struggles, with both schools failing to meet academic standards in recent years. Despite initial promise, the schools were unable to recover from the disruptions caused by the pandemic, leading to the difficult decision to close.

"This decision comes after years of challenges. While IDEA made efforts, they ultimately weren't able to deliver the results students deserved," said Dr. Noemi Donoso, CEO of New Schools for Baton Rouge. "This is a wake-up call about the complexities of transplanting suc-

cessful models into a different state with different needs and accountability systems."

As the closure date approaches, local education leaders, including officials from IDEA, New Schools for Baton Rouge, and the East Baton Rouge Parish School System (EBR), are working together to find a solution for the displaced students. Among the options under consideration are transitioning the schools to a new charter operator, integrating students into other successful district schools, or partnering with a new organization to take over operations.

"We are focused on providing students with a high-quality educational experience, and we will explore all options to ensure a smooth transition," Dr. Donoso added.

IDEA Public Schools issued a statement acknowledging their failure to meet the academic needs of students. The organization emphasized its commitment to working with EBR and other community partners to ensure a seamless transition and provide continued support to families during the change.

"Though we are proud of the perseverance shown by our students, families, and staff, it's clear that new opportunities are necessary

to give these students the education they deserve," IDEA's statement read. "We are committed to working with our partners to provide a successful transition for all affected families."

The East Baton Rouge School System has already begun formulating plans for the upcoming transition. In a statement, EBR officials expressed their dedication to ensuring that all students, including those impacted by the closure, have access to outstanding, tuition-free educational opportunities. EBR intends to present a range of options to the school board soon.

As the closure looms, Dr. Donoso stressed the im-

portance of finding the right educational solution for the students, many of whom have spent years in underperforming schools. "When children spend years in failing classrooms, it has a lasting effect on their future success," she said. "The best outcome would be for students to remain in their current schools with a new, high-quality operator."

Discussions are ongoing, and families affected by the closures are encouraged to stay informed as more information becomes available about the transition and future options for their children.

Louisiana Lawmakers Concerned as Key Voting Rights Case Threatens Protections for Black Voters

NEW ORLEANS — As the Martin Luther King Jr. Holiday approaches, Louisiana lawmakers are voicing strong concerns over the *Naime v. Landry* case, a pivotal legal challenge that could undermine protections under the Voting Rights Act (VRA). Specifically, the case centers on Section 2 of the VRA, which prohibits racial discrimination in voting, and its potential removal could reverse decades of progress in securing fair political representation for Black voters in Louisiana.

The case arises from a dispute over the state's 2022 redistricting maps, which have been criticized for diluting Black voting power. Louisiana officials are urging the U.S. 5th Circuit Court of Appeals to declare Section 2 of the Voting Rights Act unconstitutional, arguing that the state no longer requires federal oversight due to high Black voter turnout. Deputy Solicitor General Morgan Brungard argued that "conditions that originally justified these measures no longer apply."

However, for many lawmakers in Louisiana, particularly those representing Black communities, the outcome of this case could have profound consequences. Currently, the state's redistricting maps include only 28 majority-Black districts out of 105 in the House and 11 out of 39 in the Senate, despite Black residents making up nearly a third of Louisiana's population.

Rep. Edmond Jordan, D-Baton Rouge, is among those advocating for change, planning to introduce a new redistricting



Rep. Edmond Jordan, D-Baton Rouge

bill during the upcoming legislative session. Jordan believes Louisiana's current district maps fail to reflect the state's diverse demographic and is calling for the creation of at least six additional majority-Black districts in the House and three in the Senate.

In a significant ruling last year, U.S. District Judge Shelly Dick found that Louisiana's redistricting plan violated the Voting Rights Act, blocking future elections under the current maps. However, special elections for two vacant Senate seats are scheduled for February 2025.

If the state's appeal succeeds and Section 2 is declared unconstitutional, it could set a dangerous precedent, allowing other states to implement discriminatory voting laws without federal oversight. Legal experts warn that such a ruling could undermine the political power of Black communities, making

it harder for voters to elect representatives who truly reflect their interests.

The U.S. Department of Justice (DOJ) has intervened in the case, defending the constitutionality of Section 2 and stressing that Louisiana's argument could encourage other states to bypass voting protections. DOJ attorney Noah Bokot-Lindell emphasized that states cannot seek exemptions from federal laws meant to protect civil rights.

Louisiana Attorney Gen-

See **VOTERS**, on page 3

INFLATION from page 2

goods.

- Consumer Choices: More families are turning to private-label brands, bulk purchases, and local farmer's markets to stretch their budgets.

- Conclusion: A Challenging Road Ahead

Louisiana residents, particularly those in African American and marginalized communities, face a tough year ahead as high grocery costs persist. Addressing systemic inequities and supporting community initiatives will be key to navigating this economic landscape.

For now, families are urged to stay informed about inflation trends, explore available resources, and adopt cost-saving strategies to weather the ongoing financial challenges.

GERARD FLOORING

COMMERCIAL AND RESIDENTIAL FLOORING INSTALLATION SPECIALISTS

For over 20 years Gerard Flooring has served Baton Rouge and surrounding areas. Let us transform your existing flooring into something you can be proud to show your neighbors, friends or business associates. After all, first impressions are lasting so why not make a good one? We can help!

CERAMIC TILE • MARBLE • HARDWOOD FLOORS
COUNTER TOPS • STRIPING AND REFINISHING
MEXICAN AND BRICK FLOORS

SCHEDULE YOUR FREE ESTIMATE TODAY!
CONTACT DAVID G. PAYNE (225) 235-4281

SUITS • HATS • SHOES • SHIRTS • FASHION ACCESSORIES

EVERYDAY SALE

Visit The Syle Master "Mr. Super Cool Keith B. O'Connor"

6180 Airline Hwy
Baton Rouge, La. 70805
225.357.5796

SUPER COOL

A BRAND OF STYLE AND SOPHISTICATION *fashions*

RELIGION

From Law to Grace: Embracing Freedom Through Faith

We live in an environment that encourages self-effort. As a result, we struggle with issues that often are too big to handle on our own, and get frustrated when things don't improve. This was what the people did under the law, with disastrous results. Things go smoother, however, when we have the wisdom to let go of the problem and let God handle it as only He can.

God's wisdom isn't the world's wisdom; we can't understand His comprehensive plans and purposes with our logical minds. "For my thoughts are not your thoughts, neither are your ways my ways, saith the Lord. For as the heavens are higher than the earth, so are my ways higher than your ways, and my thoughts than your thoughts" (Isaiah 55:8, 9). Instead of trying to force things to happen through our own efforts, relying on Jesus, who is grace, changes things. Trusting in our own works reflects self-dependency, but trusting in Him instead of in ourselves empowers our lives.

During the time of Moses, the people didn't have grace yet, only a pair of stone tablets to govern their actions. Anyone not following the law was condemned to death. When Jesus came and fulfilled the laws of old, He breathed life into them. "This is the covenant I will make with them after that time, says the Lord. I will put my laws in their hearts, and I will write them on their minds" (Hebrews 10:16, NIV). Jesus' laws are based on life, not death, and they govern our hearts.



It takes courage to step out in faith, trusting that grace is sufficient to carry us through. The world operates in fear and defeat, but God's love is big and powerful, victorious and all-encompassing. Believers are set apart from the world because the world doesn't know Him, but we do. "The Spirit of Truth, Whom the world cannot receive (welcome, take to its heart), because it does not see Him or know and recognize Him. But you know and recognize Him, for He lives with you [constantly] and will be in you" (John 14:17, AMPC).

Under Old-Testament law the focus was on sin, and the people were constantly reminded of their guilt and in-

adequacy. No one could keep the hundreds of rules and regulations, and the priests were the only individuals allowed to come into God's presence. Jesus was the game-changer. He wrote the law of love on our hearts, became the intermediary between God and man, and replaced death and condemnation with life, mercy, and compassion.

Firmly believing in grace releases God's power in our lives. It's essential not to hinder it by mixing His grace with our works; doubt cancels the manifestations of grace. Jesus emphasized the importance of this. "No man also seweth a piece of new cloth on an old garment: else the new piece that filled

it up taketh away from the old, and the rent is made worse. And no man putteth new wine into old bottles: else the new wine doth burst the bottles, and the wine is spilled, and the bottles will be marred: but new wine must be put into new bottles" (Mark 2:21, 22).

We mustn't confuse things by trying to live under the law while trying to live under grace at the same time. This is a mistake, because we end up discouraged when we don't see the next-level results we're hoping for. No longer do we have to work hard to atone for past mistakes. Simply resting in God spares us from useless effort with nothing to show for it.

What Does It Mean to Be Community?

By Chris Altazan
In His Honor Ministries

embracing vulnerability—both in giving help and accepting it when we need it.

Being a community means being woven into a network of shared experiences, mutual support, and collective purpose. It's about creating connections that go beyond mere proximity or common interests, forming bonds that sustain us through moments of joy and times of struggle. At its core, community embodies reciprocity—the understanding that we both give and receive. It means bringing a meal to a neighbor who's ill, volunteering at a local shelter, or simply offering a listening ear to someone who needs to be heard. These small but meaningful acts build trust and strengthen the social fabric that holds us together.

Communities also serve as repositories of shared wisdom and cultural heritage. Whether they exist in neighborhoods, faith groups, or online spaces, they pass down stories, traditions, and values that give members a sense of belonging and identity. These shared legacies are the frameworks that help us understand our place in the world and the responsibilities we owe to one another.

Yet, being part of a community isn't always easy or comfortable. It challenges us to step outside of our individual perspectives, to compromise, and to work through conflicts constructively. Community requires showing up for others, even when it's inconvenient, and

Consider Baton Rouge, Louisiana's capital city, as a living example of what it means to be a community. Its vibrant cultural fabric is woven from French, African, Spanish, and Native American influences, and that diversity is reflected in its traditions. The city's renowned food scene highlights the heart of community, with Cajun and Creole dishes like jambalaya and crawfish étouffée bringing people together. Baton Rouge's spirit comes alive through its arts, from the Shaw Center for the Arts to the soulful sounds of jazz and zydeco that pulse through its streets. LSU adds youthful energy to its cultural fabric, while historic neighborhoods like Spanish Town preserve the city's architectural legacy. Annual festivals celebrate this rich confluence of cultures, making Baton Rouge a dynamic example of how shared traditions and diversity can thrive in harmony.

In an increasingly fragmented world, strong communities act as anchors. They provide stability, meaning, and the profound reminder that we are not alone in our journeys. To be a community is to be woven into a collective story, where every thread matters, and where each of us plays a part in making the whole stronger.

Visit our new website

brweeklypress.com

Good Shepherd Full Gospel B.C.
The People's Church
2865 Mission Drive • Baton Rouge, 70805 • Telephone (225) 356-5873
Bishop H. Hayes, Pastor

Hour of Power	12 Noon Each Wednesday
Sunday School	8:00am
Church Service	9:00am
Communion Service	2nd Sunday 9:00am
Bible Study Wednesday	7:00pm
Sister/Brotherhood Meeting	6:00pm

OASIS CHRISTIAN CHURCH
4524 East Brookstone Drive
Baton Rouge, LA 70805
www.occb.org
See Website for Service and Streaming Live Times

BISHOP CHARLES E. WALLACE, PASTOR

CAMPBOR MEMORIAL UNITED METHODIST CHURCH
8742 Scenic Highway – Baton Rouge, Louisiana 70807
Telephone: (225) 775-4106 - Fax: (225) 615-8359
Rev. Elenora Mackey Cushenberry, Th.D, Senior Pastor
Rev. Tiffanie C. Postell, Associate Pastor

Sunday School	9:30 a.m.
Worship Service	10:55 a.m.
Youth Sunday & Contemporary Worship	2nd Sun. 8:00 a.m.
Bible Study	Wed. 12:00 Noon and 5:00 p.m.
Prayer Ministry	Tues 6:00 p.m.

Kingdom Life Family Center

Sundays at 10am
Wednesday Inspirational Service 7pm

- Youth ministry every Sunday and Wednesday
- Women's Ministry 2nd Saturdays

BISHOP DESIGNATE DOROTHY DANIEL
SENIOR PASTOR

8894 AIRLINE HWY. BATON ROUGE, LA 70815
www.kingdomlifebr.com

THE BRWEEKLY PRESS CHURCH DIRECTORY ADVERTISE YOUR

- Church Services and programs
- Streaming Live URL
- FREE first priority announcement place

STARTING AT ONLY **\$1000** per week

For details call 225.775.2002

NEW BIRTH FULL GOSPEL MINISTRIES
1283 Rosenwald Road
Baton Rouge, Louisiana 70807
Bishop I. J. Payne, Pastor

'THE NEW LIFE' Therefore if any man be in Christ, he is a new creature: old things are passed away; behold, all things are become new. — 2 Corinthians 5:17

SUNDAY WORSHIP	Every Sunday at 11:30 A.M.
SUNDAY SCHOOL	Every Sunday at 9:30 A.M.
HOLY COMMUNION	Every 3rd Sunday at 11:30 A.M.
HOUR OF POWER	Every Friday at 12 NOON

Radio Broadcast 1st and 3rd Sunday WXOK at 8:00am

ST. JOHN BAPTIST CHURCH
Dr. Donald R. Ruth, Pastor
820 New Rafe Mayer Road
Baton Rouge, LA 70807
Phone: 225-775-9756
Web Address: saintjohnbc.org

Dr. Donald Ruth, Pastor

Worship Times:
CrossWalk Classes: Sundays 9:30 AM - 10:30 AM
Sunday Worship Experience: 11:00 AM
Uplift Training: Thursdays 7:00 PM - 8:00 PM

NEW HOPE BAPTIST CHURCH
5856 Greenwell Springs Road • Baton Rouge, Louisiana 70806
Telephone: (225) 926-0246 • Facsimile: (225) 925-8022
Toll Free: 888-700-6174
Websites: www.newhopebr.com

Rev. Leo Cyrus Sr., Pastor

CHURCH SCHEDULE

Sunday Morning Worship	10:45 AM
Lords Supper	3rd Sundays
Sunday School	9:30 AM
Prayer Service	Wed. @ 6:00 PM
Bible Study	Wed-@ 7:00 PM

Mission Statement: New Hope Baptist Church is a family of baptized believers who worship the Lord our God in spirit and in truth, teach the saved to reach the lost and minister to the needs of others, while encouraging one another through acts of love and living in obedience to Gods Word

Stellar Awards NOMINATED
24/7 PRAISE RADIO Online!
YOUR GLOBAL INSPIRATION STATION

ALWAYS ON • ALWAYS CLEAR NO MATTER WHERE YOU ARE IN THE CITY THE STATE OR IN THE WORLD! • WWW.247PRAISERADIO.CO

BUSINESS

ExxonMobil Baton Rouge Honored as 2024 Large Manufacturer of the Year

BATON ROUGE, La. — The Louisiana Association of Business and Industry (LABI) has named ExxonMobil's Baton Rouge Complex the 2024 Large Manufacturer of the Year. The award, presented during LABI's Business Excellence Awards banquet on November 20, recognizes the company's significant contributions to Louisiana's economy, technological advancements, and community initiatives.

A centerpiece of ExxonMobil's recent accomplishments is its \$230 million investment in modernizing the Baton Rouge Complex. This upgrade has bolstered the facility's technological capabilities, created jobs, and strengthened its competitiveness in the global market. The investment underscores ExxonMobil's commitment to driving economic growth in Louisiana.

ExxonMobil's Baton Rouge facility is among the world's largest refining and petrochemical complexes, producing essential fuels and chemical products integral to daily life. Its wide-ranging outputs, from



lightweight automotive parts to synthetic rubber, highlight the critical role the complex plays in various industries.

LABI's Business Excellence Awards celebrate organizations and individuals shaping Louisiana's economy and workforce. ExxonMobil's selection as Large Manufacturer of the Year emphasizes its pivotal role in economic development and innovation within the state.

Beyond its economic im-

act, ExxonMobil has a long history of community engagement. The company supports philanthropic initiatives, environmental programs, and first-responder training efforts, demonstrating a commitment to improving the quality of life for Louisiana residents. These initiatives reflect ExxonMobil's dedication to being a responsible corporate citizen.

"We are honored to receive the Business Excellence Award

for Large Manufacturer of the Year," said Regina Davis, Baton Rouge Refinery Complex Manager. "For generations, local families have trusted ExxonMobil as a place to build rewarding, lifelong careers. Our achievements are a testament to the dedication, expertise, and skill of our 6,000-strong workforce."

ExxonMobil has operated in Baton Rouge for over 115 years, fostering economic growth and creating opportunities for future generations. With its enduring presence and commitment to innovation, the company remains a key contributor to Louisiana's prosperity and development.

VOTERS from page 3

eral Liz Murrill, however, has argued that Black voters would still be protected under the Equal Protection Clause of the 14th Amendment if Section 2 were struck down. She also expressed hope that the U.S. Supreme Court would ultimately address the issue.

As the case progresses, the outcome could have major implications for Black voters and voting rights protections in Louisiana and across the country. With the Martin Luther King Jr. Holiday serving as a reminder of the ongoing fight for civil rights, the timing of this legal challenge is significant. For Louisiana lawmakers and advocates, Naime v. Landry is not just a legal case—it's a critical battle to preserve the hard-won progress of the civil rights movement and ensure fair representation for all voters in the state.

BRWEEKLYPRESS BUSINESS/SERVICE DIRECTORY

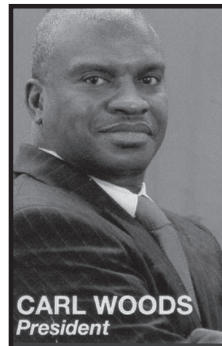


FOR BUSINESS

Sonya's Creations LLC
Portraits / Weddings / Events



Photography & Custom Design
225-286-9377 sonyacreations@gmail.com
https://linktr.ee/sonyacreations



CJW Distributors, LLC
CHURCH FURNITURE • FLOORING

13937 Malbec Ave.
Baton Rouge, LA 70816

Ph: 225-292-0305
Cell: 225-405-3427
Fax: 225-292-0307

Email: cjw7@att.net
www.cjwdistributors.com



"Team Working For Success Through Quality Performance"

Civil Engineers Needed
W.T. Winfield, Manager
2622 North Street, Baton Rouge, LA
222-383-0822 or 1-866-324-WTAA Toll Free

BRIDGET MONTGOMERY
Certified Tax Accountant



4910 Monticello Blvd., Ste C
Baton Rouge, LA 70814
Cell PH: 407.630.2947

Classifieds

PLACE AN AD

Sell your stuff, advertise jobs or a place to rent. You can do it ALL here!

For legal, please call the Classified Department at (225) 225-775-2002 or email brweeklypress@yahoo.com

SELL YOUR CAR - 1 month for \$80

ADVERTISE YOUR BUSINESS - 1 month for \$150

ADVERTISE ON 247praiserradio.com

ITS EASY TO FIND WHEN YOU KNOW WHERE TO LOOK
The Weekly Press Classifieds is the place.



YOUR AD COULD BE HERE!
Call the BR Weekly Press



to place yours TODAY!
225-775-2002

CLASSIFIEDS

Michael Bell Jr Public Notice of Intent to Sue Regarding Breach of Accord and Satisfaction Agreement, UCC Violation And Debt Bondage Violation

Date: January 09, 2024
To: ATTN: CEO Jane Verret
Campus Federal Credit Union
6230 Perkins Road
Baton Rouge, LA 70806

Certified Mail Number: 9589071052700307522592

From: Michael Bell Jr
520 Wooddale Blvd Apt 119
Baton Rouge, La 70806

This Serves as a formal notice of intent to Sue Regarding Breach of Accord and Satisfaction Agreement we entered into on March 28, 2024 pertaining to Acct # 10812409, UCC Violation, Damages and Debt Bondage Violation

Background:

On March 28, 2024 Campus Federal Credit Union reached an agreement to settle a bonafide dispute related to my account. The terms of the agreement stipulated that Louisiana Revised Statutes Title 10, Section 3-311 applies when the claim is unliquidated or disputed in good faith by the debtor. This statute allows writing on a check or money order stating "payment in full" as evidence of Accord and Satisfaction if certain conditions are met. In good faith I fulfilled my obligation under the agreement by disputing the debt by administratively and notifying as of no repayment in 90 days constitute full satisfaction. I informed them this was coming in my bonafide dispute and when it came, which shows the mutual consent in good faith!

Notation of the negotiable instrument Money order for less the full amount. Campus Federal Credit Union has failed to uphold its obligations under the Accord and Satisfaction Agreement under the rules of Louisiana by knowingly accepting money order with clear and conspicuous restrictive endorsement on March 28, 2024 money order # 29266932306amount \$733.36.

This account is in regard to a dispute "in good faith" barring Campus Federal Credit Union from suing for the remaining balance. Breach of Agreement has occurred by continuing reporting a balance to credit report agencies after the acceptance, endorsing and cashing of Money order. In which I have a Copy of the Money order where Campus Federal Credit Union endorsed. The Federal Reserve Bank mailed me the money order inquiry. Campus Federal Credit Union opportunity to refund Money order lapse on June 29, 2024 (90-day refund period per Louisiana Statute).

The breach has caused significant harm, such as financial loss and repayment after March 28,2024 should be refunded totaling \$6,600.24 from April to December of 2024. Also affecting debt to income ratio on credit report.

UCC violation as I mailed a UCC 9-210 and no response was mailed back to me in 14 days by law. Also mailed a billing error notice, which no response has been mailed back at all. This relinquishes any alleged debt that Campus may try to enforce

Furthermore, I mailed out a default notice. Everything is very details and properly documented.

On November 29, 204 I reached out to Ms. Dayana Alexander. I must also inform you that I am a victim of human trafficking, specifically debt bondage, as determined by Agape Advocate Consulting, Founder Dayana Alexander Authorized Agency, an agency appointed by the Attorney General. This designation provides me with certain legal protections, including immunity from debt collection and enforcement under such conditions. I am entitled to certain legal protections under federal law.

Any further attempts by your company to collect, enforce, or report on this is a violation of these federal protections, will result in immediate legal action. I will not hesitate to pursue a formal complaint with the Attorney General's office, file complaints with the Consumer Financial Protection Bureau (CFPB), the Federal Trade Commission (FTC), and other relevant authorities, and seek judicial remedies for any violations. This bondage is causing severe Stress and more harm of financial loss!

As the I am the plaintiff who uses accord and satisfaction, (he) retain the right to assert (his) claims regarding the prior contract. See Restatement (Second) of Contracts § 281 and § 3, the presence of an accord and satisfaction does not automatically stop the plaintiff from asserting a breach of contract claim. Plaintiff would like to educate defendant that no argument that it can only serve as an affirmative defense does not apply in Plaintiff situation, as his actions and the language used conspicuous indicate clearly that he is pursuing enforcement (the satisfaction) of the new agreement (the Accord.) So any argument of being an affirmative defense only does not negate his claim.! And I have Cited cases to support if lawsuit action is needed.!

Intent to Sue:

If I do not receive a satisfactory response within 14 days from the date of this local publication, confirming that Campus Federal Credit Union will take the necessary steps to fulfill its obligations under the Accord and Satisfaction Agreement, I will be forced to pursue legal action to enforce the agreement and seek compensation for the damages I have incurred.

I am confident that we can resolve this matter amicably. However, I am prepared to take all necessary legal steps to protect my rights. Take heed that a Federal case will be filed in the USDC Middle District of Louisiana promptly if Breach is not resolved.

I am respectfully giving Campus Federal Credit Union 14 business days to Cease debt, refund me and give notice of title details will be on the way in writing. It would be wise to do what's Right.

Please contact me at the address listed above or on account file to discuss this matter further.

Thanks,
Michael Bell Jr



**Be ready
for
anything.**

From unexpected gifts or a stop by from your oldest, we all love a surprise. But **flu, COVID-19, and RSV** can catch you off guard. These viruses are 10 times more likely to hospitalize adults 65 and older than people under 50. Lower your risk of severe illness with this season's vaccines and be ready for the good surprises.

Get started at [vaccines.gov](https://www.vaccines.gov)

**RISK LESS.
DO MORE.**
Get this season's vaccines

Paid for by the U.S. Department
of Health and Human Services.

